

CONTENTS

Preface	002
Topics	003
Mission of Japan Customs	004
SMART Customs Initiative 2020	008
Effective Border Management	010
No escape for any smuggling	012
Anti-terrorism and anti-WMD (Weapons of Mass Destruction) Measures	014
IPR Enforcement at the Border	016
Advance Ruling / Post clearance Audit / Investigation	020
Authorized Economic Operator (AEO) Program	024
Effectiveness of an AEO Program	026
Partnership with Overseas AEO programs	028
Liberalization of customs offices to which import/export declarations are submitted	030
Faster Customs Clearance Procedures through NACCS	032
Single Window	034
Activities in the field of WTO	039
Promoting Economic Partnership	040
Asia-Pacific Economic Cooperation (APEC)	042
Asia-Europe Meeting (ASEM)	043
World Customs Organization (WCO)	044
Customs Capacity Building	046
WCO Regional Training Centre	047
WCO Regional Customs Laboratory	047
Training to develop desired Customs officials	048
Diagram of Customs & Tariff Bureau and regional Customs	053
Japan Customs Jurisdiction	054
History of Japan Customs	056
Japan Customs 150th Anniversary	058
Japan Customs Operations at a glance	060
Drug seizures in Japan	061
Export and Import permissions through NACCS	062
Countries and economies under Japan's Generalized System of Preference (GSP)	063
Generalized System of Preference (GSP)	064
Trade Statistics	065
Contact Information	068



– The total seizure amount of illicit drugs exceeded one ton in seven consecutive years. –



Japan Customs, cooperating with businesses and government authorities around the world, achieves its Missions

Preface

The Customs and Tariff Bureau and Japan Customs have carried through three missions; ensuring safe and secure society through effective law enforcement at the border, collecting customs duties and domestic consumption taxes appropriately and fairly, and facilitating trade, including faster customs procedures.

Under expansion of covid-19 and a distribution system becomes more important, Japan Customs has been trying to provide appropriate and prompt Customs clearance with a sense of tension.

All of these should lead towards the sound development of world trade. Effective enforcement at the border, leading to peoples' security and safety, is one of the important missions for Japan Customs. In addition to the control of methamphetamine, cannabis, other illicit drugs and firearms and terrorism-related materials, Japan Customs has further enhanced its control at the border over smuggling of intellectual property rights (IPR) infringing goods, counterfeit postage stamps, and stolen automobiles.

Appropriate and fair collection of customs duties and domestic consumption taxes are also an important mission. In FY2021(April 2021 to March 2022), the revenue collected by Japan Customs is ¥11.2trillion, which is nearly equivalent to 15.5% of tax and stamp revenues

Japan Customs is striving to collect duties and taxes appropriately and fairly as a national tax collecting agency.

Furthermore, international distribution has become further sophisticated and diversified in recent

years and it is another important mission for customs to ensure security and facilitation of trade at the same time. In order to meet this difficult challenge, Japan Customs, following the SAFE Framework of Standards to secure and facilitate global trade of World Customs Organization (WCO) and in cooperation with other countries, has developed partnerships with private companies and implemented the Authorized Economic Operator (AEO) program.

Under the AEO program, Japan customs approves operators with excellent compliance and grants them benefits such as simplified customs procedures.

Japan Customs has realized the advanced customs clearance system with state-of-the-art IT technologies as an infrastructure to support various customs activities. Japan Customs has also worked on research and development of new equipment and focused on training customs officials to develop them into talents who can fulfill domestic and foreign demands of the new era.

The Customs and Tariff Bureau, as an authority responsible for customs legislation and administration, is contributing to international trade negotiations.

Japan has promotes strategically and expeditiously the economic partnership negotiations ("Follow up on the Growth Strategy"(Cabinet Decision on June 21th,2019). Based on this policy, the Customs and Tariff Bureau, together with other relevant ministries, is negotiating with various countries to conclude EPAs and is strengthening a multilateral trading system under the

World Trade Organization (WTO) .

At the same time, the Customs and Tariff Bureau is actively participating in and promoting the measures led by the WCO to further harmonize and standardize the customs procedures and to promote international cooperation between foreign customs.

Japan Customs will celebrate the 150th anniversary in November 2022 since "Unjosyo" was renamed to the "Zeikan" and the Customs was officially established.

With the dawn of a new era, Japan Customs is aiming for being the most advanced Customs in the world with by medium-to long-term vision of customs administration "SMART Customs Initiative 2020", which is meet the expectations of the public 20-30 years from now.

Japan Customs will further enhance customs capacity building activities, which have been carried out for a long time, mainly in Asian countries.

In order to respond to changes in domestic and international socioeconomic situations while reflecting various stakeholders'views as much as possible, the Customs and Tariff Bureau and Japan Customs are committed to making utmost efforts to accomplish its missions by further enhancing cooperation with other government agencies and foreign customs authorities.

June 2022

Customs and Tariff Bureau
Ministry of Finance, Japan

In 2022, the total seizure number of illicit drugs*1 showed an increase to 1,044 (up 25% YOY), while the total seizure amount*2,3 showed a decrease to approx. 1,147kg (down 8% YOY). The total seizure amount of illicit drugs exceeded one ton in seven consecutive years, which showed a very serious situation.

As for the total seizure figures of illicit drugs by mode of transport, the seizure number of smuggling by "Air Cargo" was 207 (up 92% YOY), the seizure number of smuggling by "International Mail" was 724 (up 5% YOY) and the seizure number of smuggling by "Air Passenger" was 94 (up approximately 3.9 times YOY) , each mode of transport increased over the previous year.

*1: The term "illicit drugs" refers to methamphetamine, cannabis, opium, narcotics (cocaine, heroin, MDMA, etc.), psychotropic substances and designated substances.

*2: Tablet-shaped illicit drugs are not included.

*3: Only fixed amount of each seizure case is added to the total amount. The same applies hereinafter.

Japan Customs seized large number of illicit drugs were concealed in air cargoes, international mails and air passengers' belongings.

Case ① » Air Cargo

Approx. 5.6kg of methamphetamine was detected from air cargo, canned food, arriving from Turkey.

| In January 2022, Tokyo Customs |



Case ② » Air Cargo

Approx. 4.8kg of cannabis resin was detected from air cargo, wooden table, arriving from India.

| In June 2022, Moji Customs etc. |



Case ③ » International Mail

Approx. 1 kg of methamphetamine was detected from international mail, packages of tea, arriving from Vietnam.

| In April 2022, Tokyo Customs |



Case ④ » International Mail

Approx. 1.6kg of MDMA and approx. 212g of ketamine were detected from international mail arriving from Germany.

| In August 2022, Nagoya Customs etc. |



Case ⑤ » Air Passenger

Approx. 9 kg of methamphetamine was detected from the belongings of 3 Japanese arriving from the United Arab Emirates.

| In May 2022, Tokyo Customs |



Case ⑥ » Air Passenger*4

Approx. 10kg of cocaine was detected from the belonging of a Peruvian arriving from Peru.

| In September 2022, Osaka Customs |



*4: Smuggling by air passengers increased in the second half of 2022.

The seizure number of gold smuggling was 9 / the seizure amount was approx. 135kg



The seizure number of gold* smuggling was 9 (up 80% YOY), and the seizure amount was approx. 135kg (up approximately 5 times YOY), both of which increased.

After the upper limits of penalties were raised in April 2018, both the number and the amount of seizure decreased significantly. On the other hand, shrewd methods of concealment have been reported, and the price of gold has remained high. Therefore, Japan Customs continue to actively implement strict control.

*: The term "gold" includes gold bullion and other processed gold products.

Detected shrewd methods of concealment

Case ① »

Concealed in tangsten bars

Approx. 30kg of gold was detected from air cargo (tangsten bars) arriving from Hong Kong.



Case ② » Concealed in smartphone holders

Approx. 22kg of gold was detected from air cargo (smartphone holders) arriving from China.

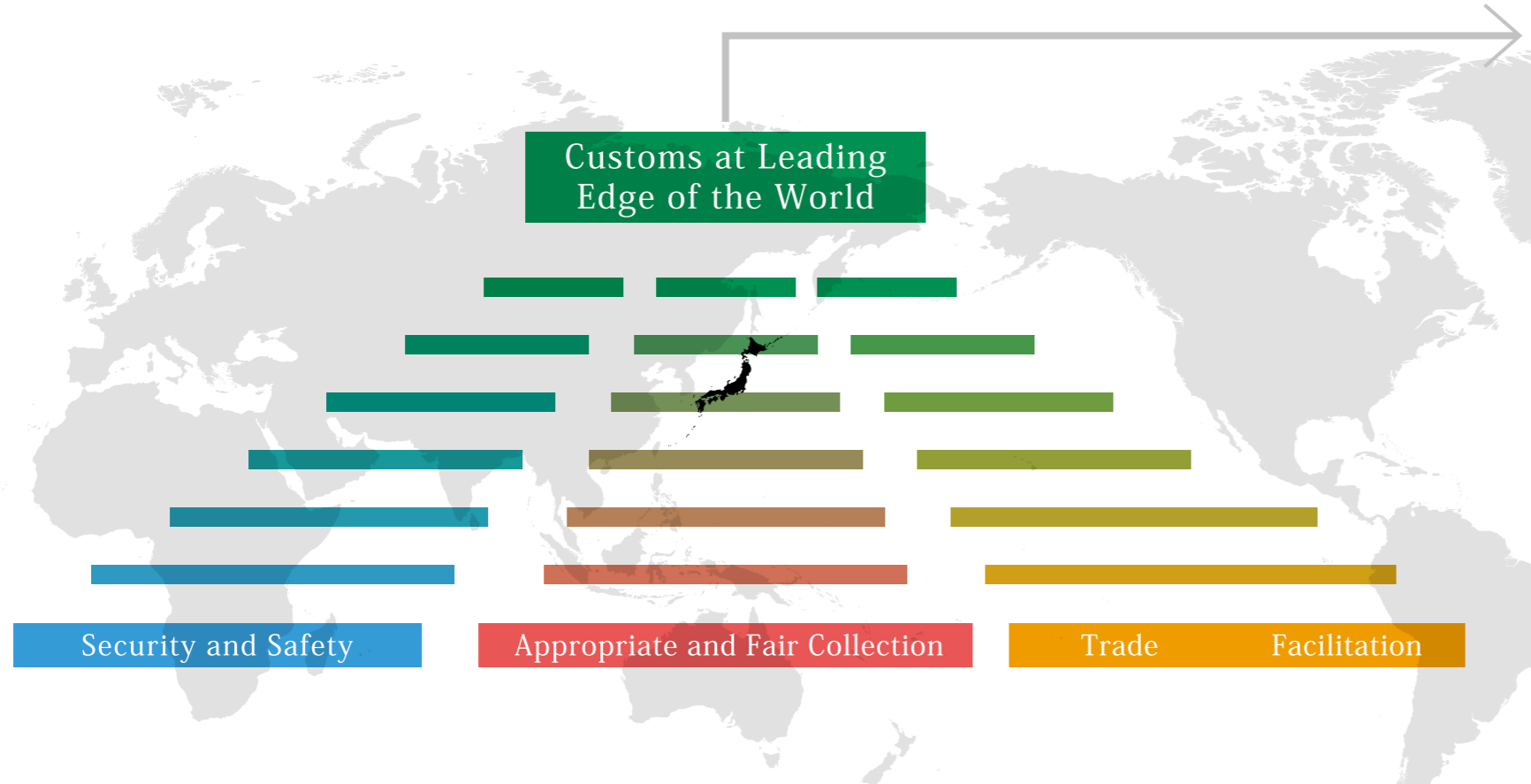


Mission of Japan

Customs

Goal: Customs at the Leading Edge of the World

Japan Customs aims to be a leading agency of the world to realize sound development of trade and a safe and secure society.



Three Missions of Japan Customs

- 1 Realizing a safe and secure society**
 Realizing the safest country in the world by prioritizing prevention of smuggling of firearms, illicit drugs and other harmful goods and curtailing terrorist activities in the country
- 2 Collecting customs duties and domestic consumption taxes appropriately and fairly**
 Collecting customs duties and domestic consumption taxes appropriately and fairly as a tax collecting agency accumulating about ¥11.2 trillion, which is nearly equivalent to 15.5% of tax and stamp revenues
- 3 Further facilitating trade procedures**
 To further facilitate customs procedures while ensuring security in international distribution
 Maintain and strengthen the multilateral trading system through trade negotiations like EPAs (Economic Partnership Agreements), and contribute to economic growth in Japan.

Measures to Realize Three Missions



Installing state-of-the-art inspection equipment Researching and studying leading-edge technologies to detect illicit drugs with high accuracy while installing more effective inspection equipment with existing technologies	Cooperation with private enterprises Advancing international trade facilitation by building partnerships with private enterprises	Cooperation with foreign customs authorities Improving quality of customs operation by enhancing partnership with foreign customs authorities through customs mutual assistance agreements
Cooperation with other government agencies Strict enforcement across the government as a whole in close cooperation and information exchange with relevant government agencies	Further application of ICT Realizing further simplified and efficient import/export procedures and better services for traders by applying advanced ICT for customs clearance systems	Promoting trade negotiations Realizing Customs three missions through trade negotiations like EPAs, which deal simplification and harmonization of Customs procedures, Customs cooperation and information exchange.

VISION

medium- to long-term vision of customs administration

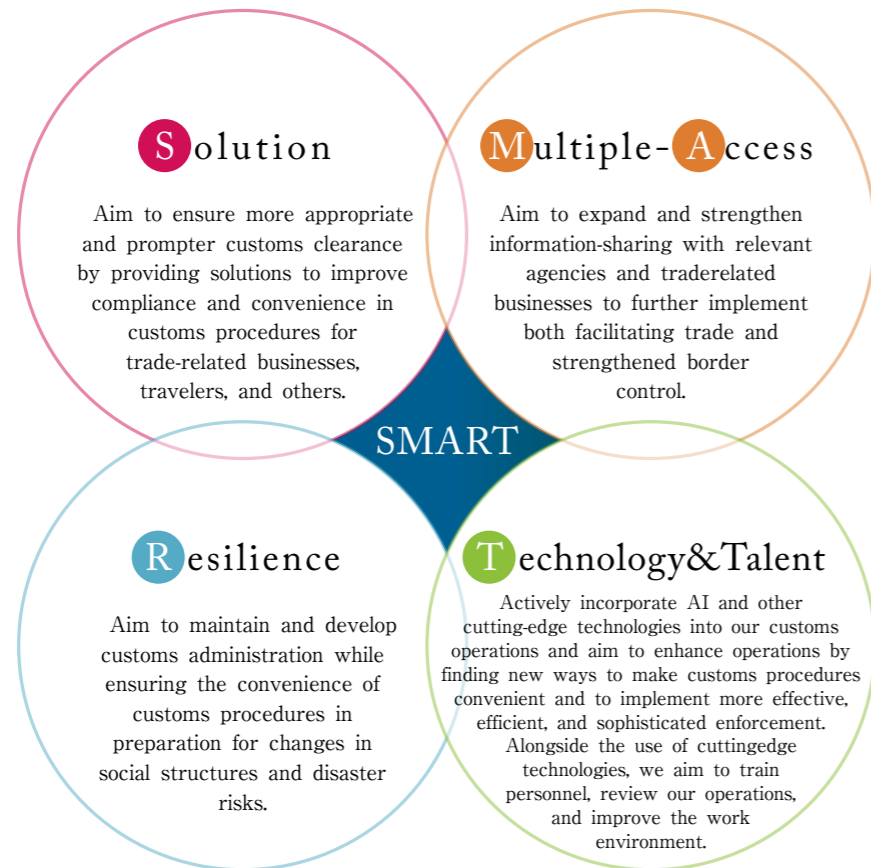
SMART Customs Initiative



the Customs and Tariff Bureau and Japan Customs must work to improve the sophistication and efficiency of our customs operations, improve convenience for our users, and meet the expectations of the public 20-30 years from now.

Aiming for the world's most advanced customs (smart customs) 「SMART Customs Initiative 2020」 (June 2020)

under the following four keywords



take initials from four keywords 「SMART」

「Action Plan 2022 for the Realization of SMART Customs」 (November 2022)

Upgraded the measures set forth in the “Initiative” by incorporating new measures to respond to the environmental changes and needs.

