

WARNING !

Drug smuggling, possession and use are illegal and severely punishable by law in Japan

Don't even think about bringing drugs to JAPAN !



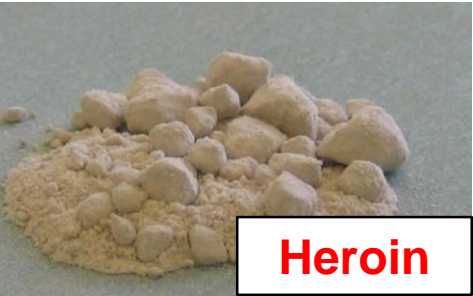
Stimulants Methamphetamine
Amphetamine



Cannabis, marijuana, hemp



Cocaine



Heroin

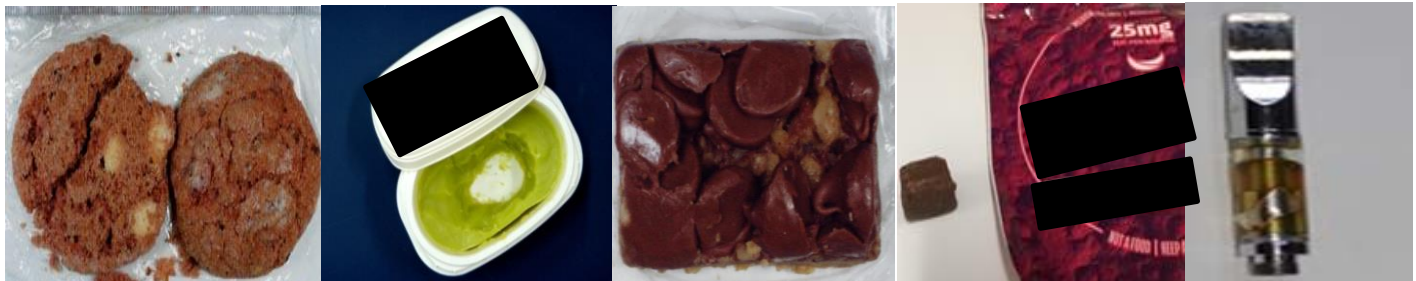


MDMA



NPS

Any products made with cannabis are not legal for any purpose



e.g. Cookies, butter, cake, chocolate, E-cigarettes, etc. made with cannabis

※ 1 The applicable laws and punishments vary depending on the drug.
(Reference Link)

[Narcotics and Psychotropics](#) [Cannabis](#) [Stimulants](#) [NPS](#)

<H P (in English)> https://www.mhlw.go.jp/stf/seisakunitsuite/bunya/kenkou_iryuu/iyakuhin/yakubut_uranou/qyousei-gaikyo/torishimari_00002.html

※ 2 To bring doctor-prescribed medicines into Japan, all necessary legal procedures must be followed
<http://www.ncd.mhlw.go.jp/en/application.html>



WARNING !

Drug smuggling is a serious crime. Violators will be severely punished, regardless of who will use the drug as well as its amount.

Many drug smuggling cases were initiated by significant others, friends, acquaintances, or even total strangers.

The following are typical schemes by which you are unknowingly recruited to act as a drug smuggler.

- ✓ Have you been asked to carry someone's luggage, personal effects, or souvenirs?
- ✓ Have you been contacted by phone, email or social media and offered a job overseas, ownership of property, or a request to transport documents/items internationally?
- ✓ Has someone offered you a free trip abroad?

Although these requests may seem innocent, they may also be signs that someone is recruiting you for drug smuggling purposes.

Be wary of offers that seem too good to be true - they probably are.



Notice! Designer Drug/NPS*

* New Psychoactive Substance

Over 2,000 designer drugs / NPS such as Rush are designated as illegal substances by Japanese law.

The import, possession and use of these substances are severely punishable by law in Japan.



These substances are listed by the Ministry of Health, Labor and Welfare (MHLW) at the site below.

https://www.mhlw.go.jp/stf/seisakunitsuite/bunya/kenkou_iryou/iya_kuhin/yakubuturanyou/gyousei-gaikyo/torishimari_0002.html



Notice!

Prescribed Opioid

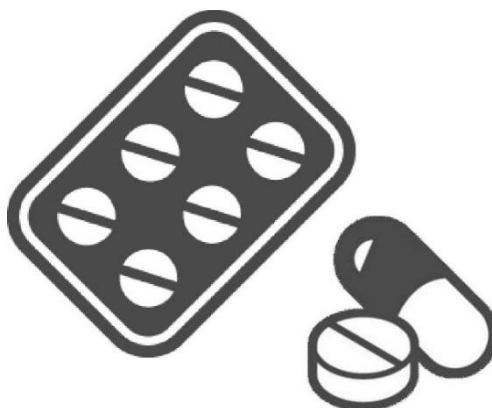
The import of opioids is restricted by Japanese law. You must acquire permission by the Japanese government in order to bring prescribed opioids into Japan. Without it, you may be arrested at your point of entry into the country.

Example

Oxycodone

Hydrocodone

Codeine



For details on the procedures to apply for permission to import, please refer to the following web site by the Ministry of Health, Labor and Welfare (MHLW).

<http://www.ncd.mhlw.go.jp/en/application.html>

The import of cannabis or cannabis derivatives is forbidden for any reason, including medical use.