

II. SIGNIFICANT SEIZURES

1. Methamphetamine

[Methamphetamine concealed in tequila bottles]

In October 2015, Yokohama Customs seized about 171 kg of methamphetamine dissolved in liquid and concealed in 1,026 tequila bottles upon inspection of containerized sea cargoes arrived from Mexico.



[Methamphetamine concealed in metal tanks]

In March 2015, Tokyo Customs seized about 44 kg of methamphetamine concealed in five metal tanks upon inspection of air cargo arrived from Mexico.



[Methamphetamine concealed in coffee bags]

In November 2015, Tokyo Customs seized about 20 kg of methamphetamine concealed in 25 coffee bags in a suitcase upon inspection of personal belongings of a Ugandan national male arrived from Uganda.



【Methamphetamine concealed in a backpack of a crew member】

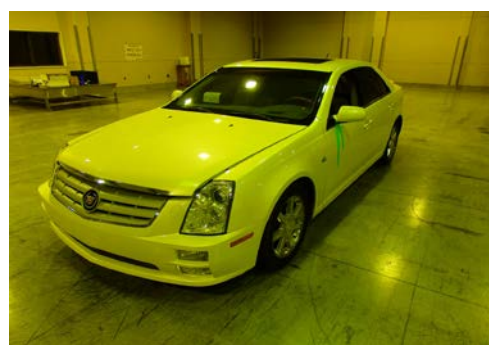
In December 2015, Kobe Customs seized about 6 kg of methamphetamine concealed in a backpack upon inspection of personal belongings of a Nigerian crew member of a foreign trading vessel entered into the Mizushima Port from Nigeria.



2. Cannabis

【Herbal cannabis concealed in the backrest of rear seats of vehicle】

In February 2015, Yokohama Customs seized about 8 kg of herbal cannabis concealed in the backrest of the rear seats of a vehicle upon inspection of containerized sea cargo arrived from the USA.



【Cannabis resin concealed in a cutting board】

In April 2015, Osaka Customs seized about 1 kg of cannabis resin concealed in a cutting board upon inspection of a small parcel mailed from the USA.



3. Narcotics

【GHB concealed in packages sent by EMS】

In July 2015, Moji Customs seized about 75 g of liquid containing 4-hydroxybutyric acid (so called “GHB”) upon inspection of packages sent by Express Mail Service (EMS) from China.



4. Designated Substances

【Designated substances concealed in a black Boston bag】

In November 2015, Yokohama Customs seized about 500 g of liquid substance containing isobutyl nitrite and isopentyl nitrite concealed in a black Boston bag upon inspection of personal belongings of a Chinese national male arrived from China.

