

II. SIGNIFICANT INTERDICTIONS IN 2011

1. Interdiction Cases by Substance Type

(1) Stimulants

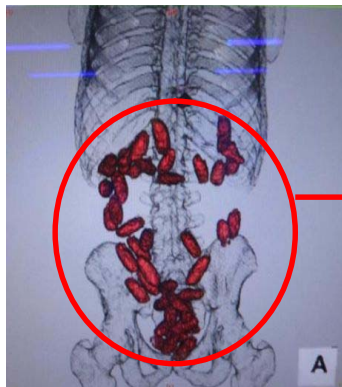
[Interdiction of stimulants concealed in a vehicle fuel tank]

In June 2011, Yokohama Customs interdicted about 64 kg of stimulants concealed in the fuel tank of a vehicle while inspecting marine cargo arriving from the United Arab Emirates.



[Interdiction of stimulants concealed inside the body]

In August 2011, Osaka Customs interdicted about 1.3 kg of stimulants bodypacked while inspecting the personal effects of a Nigerian man who arrived from France.



[Interdiction of stimulants concealed in the sides of a flight bag]

In July 2011, Moji Customs interdicted about 2.5 kg of stimulants concealed in the sides of a flight bag while inspecting the personal effects of a Japanese man who arrived from Mali.



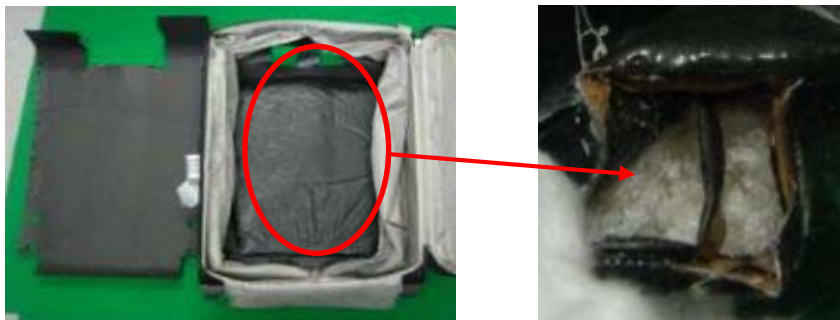
[Interdiction of stimulants concealed in an iron circular cylinder]

In January 2011, Tokyo Customs interdicted about 1.5 kg of stimulants concealed in an iron cylinder while inspecting the personal effects of a German man who arrived from Cambodia.



[Interdiction of attempted stimulant smuggling by a young woman]

In May 2011, Tokyo Customs interdicted about 1.9 kg of stimulants concealed in the bottom of a suitcase while inspecting the personal effects of a Czech woman aged 23 who arrived from the Netherlands.



[Interdiction of attempted stimulant smuggling by an air passenger from Africa]

In January 2011, Tokyo Customs interdicted about 1 kg of stimulants concealed in a toner cartridge while inspecting the personal effects of a Portuguese man who arrived from Cameroon.



[Interdiction of stimulants concealed in the bottom plate of a wood box]

In August 2011, Tokyo Customs interdicted about 2 kg of stimulants concealed inside the bottom plate of a wood box while inspecting air cargo arriving from Turkey.



[Interdiction of stimulants concealed in plastic bottles]

In September 2011, Tokyo Customs interdicted about 10 kg of stimulants concealed in 4 plastic bottles while inspecting an item of post arriving from the United States.



(2) Cannabis

[Interdiction of cannabis concealed in food]

In January 2011, Tokyo Customs interdicted about 300 g of herbal cannabis concealed in bottles for a powdered coffee creamer while inspecting an item of post arriving from the United States.



(3) Other Illicit Drugs

- Cocaine

[Interdiction of cocaine concealed in a PC]

In October 2011, Osaka Customs interdicted about 13 kg of cocaine concealed in a PC while inspecting the personal effects of a Brazilian woman who arrived from Brazil.



- Heroin

[Interdiction of heroin concealed in a false-sided suitcase]

In May 2011, Tokyo Customs interdicted about 1 kg of heroin concealed in a false-sided suitcase while inspecting the personal effects of an Australian woman who arrived from Malaysia.



- **Opium**

[Interdiction of opium concealed in a false-bottomed suitcase]

In June 2011, Nagoya Customs interdicted about 4.1 kg of opium concealed in a false-bottomed suitcase while inspecting the personal effects of a Lithuanian man who arrived from Latvia.

