

# WARNING !

**Import, possession, use , etc. of illegal drugs are subject to punishment under the law in Japan**

For example, the person who possessed / imported below illegal drugs is to be punished.

\*Use of cannabis in Japan, and the export of New Psychoactive Substance (NPS) from Japan are not prohibited by the current laws.



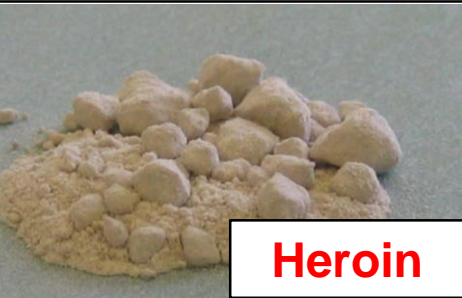
**Stimulants** Methamphetamine  
Amphetamine



**Cannabis, marijuana, hemp**



**Cocaine**



**Heroin**



**MDMA**



**NPS**

**Following items may be illegal.**

Please pay attention carefully to various edible products made with Cannabis. These products can be legally available in some countries and areas outside Japan.

**For example: Cookies, Butter, Cake, Medicines manufactured from cannabis, etc.**



Penal provisions (for example)

**Smuggling : Imprisonment of up to 7 years**

**Possession : Imprisonment of up to 5 years**

The applicable laws and punishments vary depending on the drug.

[〈Reference Link〉](#) [Stimulants](#) [Cannabis](#) [Narcotics and Psychotropics](#) [NPS](#)

# WARNING !

*Drug smuggling is a serious crime. Violators will be severely punished, regardless of its user or amount.*

Many drug smuggling cases were initiated by significant others, friends, acquaintances, or even by total strangers.

The following are typical scenarios through which you may be unknowingly recruited to act as a drug smuggler (so-called “drug mule”).

- ✓ Have you been asked to carry someone’s luggage, personal effects, or souvenirs?
- ✓ Have you been contacted by phone, email or social media, offered a job overseas, ownership of property, or a request to transport documents/items internationally?
- ✓ Has someone offered you a free trip abroad? Although these requests may seem innocent, they may also demonstrate signs that someone is recruiting you for drug smuggling purposively.

Be careful of the offer that sounds too good to be true.





# Notice! Cannabis

## Prohibition of the import of cannabis and its products

Cultivation of cannabis and import of cannabis products are subject to punishment under the law in Japan

### ●Cannabis



### ●Cannabis products \* (images are examples)

\* Cannabis products contain all products which use cannabis except the grown stalk of the cannabis plant and its products (excluding resin.) and the seed of cannabis products.



Cookies



Butter



Cake



Chocolate



Electrical  
Cigarette



Medicines

The import of cannabis or cannabis products including medical use is forbidden.\*  
\*excluding cases where Cannabis Researcher receives authorization

### ●Penal provision of Cannabis Control Act

<https://www.japaneselawtranslation.go.jp/ja/laws/view/2594>



**Import : Imprisonment of up to 7 years**

(For the purpose of profit: up to 10 years/Fine of up to 3 million yen)

**Possession : Imprisonment of up to 5 years**

(For the purpose of profit: up to 7 years /Fine of up to 2 million yen)

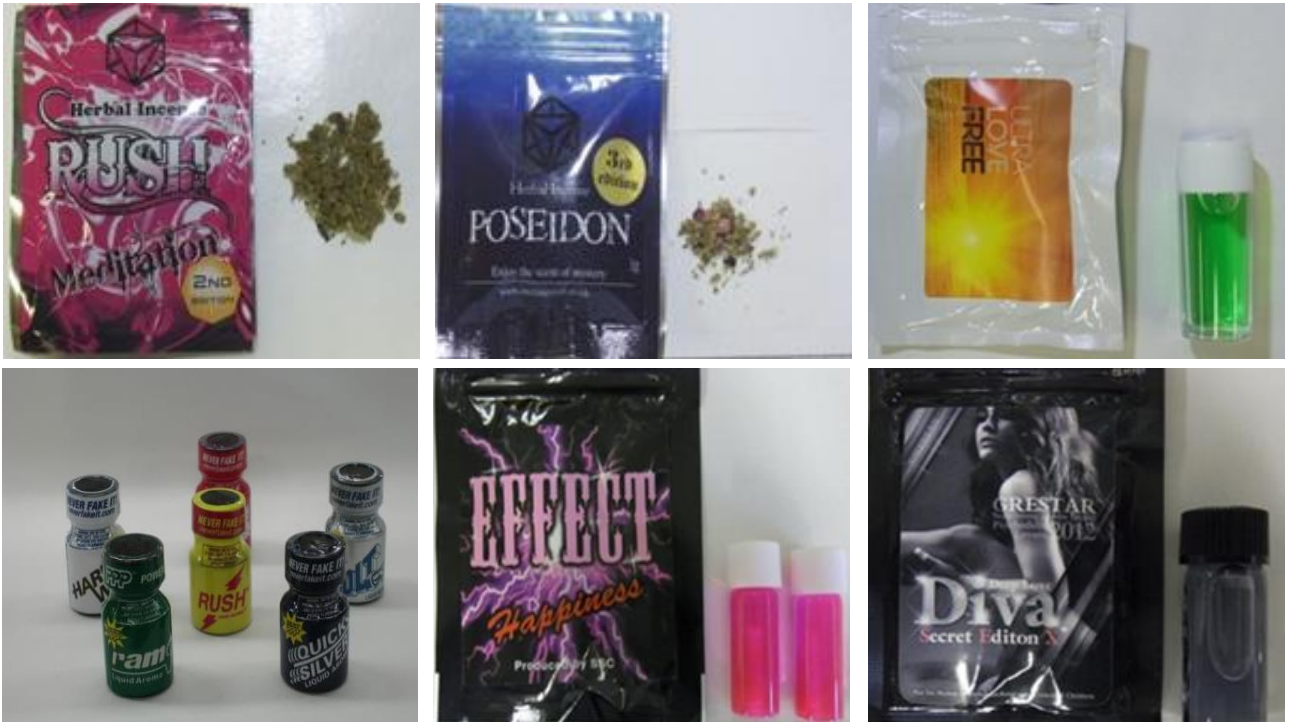


# Notice! Designer Drugs/NPS\*

\* New Psychoactive Substances (NPS) are substances of abuse in pure form or preparation that may be psycho-toxic and pose a threat to public health.

Over 2,000 designer drugs / NPS, such as "Rush", are designated as illegal substances by Japanese law.

The import, possession and use of these substances are subject to punishment under the law in Japan.



List of these substances is available in the below website provided by the Ministry of Health, Labor and Welfare (MHLW).

[https://www.mhlw.go.jp/stf/seisakunitsuite/bunya/kenkou\\_iryuu/iyakuhin/yakubuturanyou/gyousei-gaikyo/torishimari\\_00002.html](https://www.mhlw.go.jp/stf/seisakunitsuite/bunya/kenkou_iryuu/iyakuhin/yakubuturanyou/gyousei-gaikyo/torishimari_00002.html)





# Notice!

## Prescribed Opioid

The import of opioids is restricted under the Japanese law. You must acquire permission in advance by the Japanese government in order to bring prescribed opioids into Japan.

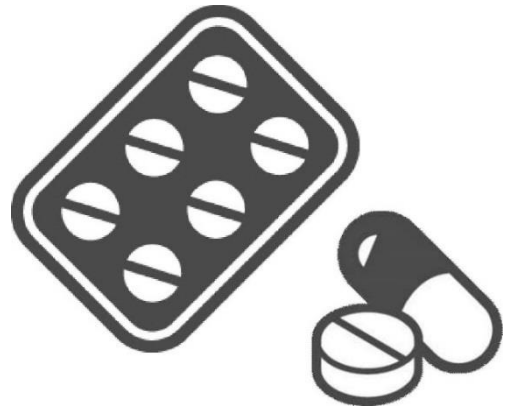
Without advance permission, you may be arrested at your point of entry.

Examples;

Oxycodone

Hydrocodone

Codeine



For the details of application procedure for permission to import, please refer to the following website provided by the Ministry of Health, Labor and Welfare (MHLW).

<http://www.ncd.mhlw.go.jp/en/application.html>

