

CONTENTS

	Preface	002
	Topics	003
	Mission of Japan Customs	004
	SMART Customs Initiative 2020	008
	Effective Border Management	010
	No escape for any smuggling	012
	Anti-terrorism and anti-WMD (Weapons of Mass Destruction) Measures	014
	IPR Enforcement at the Border	016
	Advance Ruling / Post clearance Audit / Investigation	020
	Authorized Economic Operator (AEO) Program	024
	Effectiveness of an AEO Program	026
	Partnership with Overseas AEO programs	028
	Liberalization of customs offices to which import/export declarations are submitted	030
	Faster Customs Clearance Procedures through NACCS	032
	Single Window	034
	Activities in the field of WTO	039
	Promoting Economic Partnership	040
	Asia-Pacific Economic Cooperation (APEC)	042
	Asia-Europe Meeting (ASEM)	043
	World Customs Organization (WCO)	044
	Customs Capacity Building	046
	WCO Regional Training Centre	047
	WCO Regional Customs Laboratory	047
	Training to develop desired Customs officials	048
	Diagram of Customs & Tariff Bureau and regional Customs	053
	Japan Customs Jurisdiction	054
	History of Japan Customs	056
	Japan Customs 150th Anniversary	058
	Japan Customs Operations at a glance	060
	Drug seizures in Japan	061
	Export and Import permissions through NACCS	062
	Countries and economies under Japan's Generalized System of Preference (GSP)	063
	Generalized System of Preference (GSP)	064
	Trade Statistics	065
	Contact Information	068

Japan Customs, cooperating with businesses and government authorities around the world, achieves its Missions

Preface

The Customs and Tariff Bureau and Japan Customs have carried through three missions; ensuring safe and secure society through effective law enforcement at the border, collecting customs duties and domestic consumption taxes appropriately and fairly, and facilitating trade, including faster customs procedures.

Under expansion of covid-19 and a distribution system becomes more important, Japan Customs has been trying to provide appropriate and prompt Customs clearance with a sense of tension.

All of these should lead towards the sound development of world trade. Effective enforcement at the border, leading to peoples' security and safety, is one of the important missions for Japan Customs. In addition to the control of methamphetamine, cannabis, other illicit drugs and firearms- related materials, Japan Customs has further enhanced its control at the border over smuggling of intellectual property rights (IPR) infringing goods, counterfeit securities and stolen automobiles.

Appropriate and fair collection of customs duties and domestic consumption taxes are also an important mission. In FY2023 (April 2023 to March 2024), the revenue collected by Japan Customs is ¥13.1trillion, which is nearly equivalent to 16.9% of tax and stamp revenues.

Japan Customs is striving to collect duties and taxes appropriately and fairly as a national tax collecting agency.

Furthermore, international distribution has become further sophisticated and diversified in recent

years and it is another important mission for customs to ensure security and facilitation of trade at the same time. In order to meet this difficult challenge, Japan Customs, following the SAFE Framework of Standards to secure and facilitate global trade of World Customs Organization (WCO) and in cooperation with other countries, has developed partnerships with private companies and implemented the Authorized Economic Operator (AEO) program.

Under the AEO program, Japan customs approves operators with excellent compliance and grants them benefits such as simplified customs procedures.

Japan Customs has realized the advanced customs clearance system with state-of-the-art IT technologies as an infrastructure to support various customs activities. Japan Customs has also worked on research and development of new equipment and focused on training customs officials to develop them into talents who can fulfill domestic and foreign demands of the new era.

The Customs and Tariff Bureau, as an authority responsible for customs legislation and administration, is contributing to international trade negotiations.

Japan has promotes strategically and expeditiously the economic partnership negotiations ("Follow up on the Growth Strategy"(Cabinet Decision on June 21th,2019). Based on this policy, the Customs and Tariff Bureau, together with other relevant ministries, is negotiating with various countries to conclude EPAs and is strengthening a multilateral trading system under the

World Trade Organization (WTO) . At the same time, the Customs and Tariff Bureau is actively participating in and promoting the measures led by the WCO to further harmonize and standardize the customs procedures and to promote international cooperation between foreign customs.

Japan Customs will celebrate the 150th anniversary in November 2022 since "Unjosyo" was renamed to the "Zeikan" and the Customs was officially established.

With the dawn of a new era, Japan Customs is aiming for being the most advanced Customs in the world with by medium-to long-term vision of customs administration "SMART Customs Initiative 2020",which is meet the expectations of the public 20-30 years from now.

Japan Customs will further enhance customs capacity building activities, which have been carried out for a long time, mainly in Asian countries.

In order to respond to changes in domestic and international socioeconomic situations while reflecting various stakeholders'views as much as possible, the Customs and Tariff Bureau and Japan Customs are committed to making utmost efforts to accomplish its missions by further enhancing cooperation with other government agencies and foreign customs authorities.

June 2022

Customs and Tariff Bureau
Ministry of Finance, Japan

– Over 2 tons of illicit drugs seized for two years in a row for the first time. –



In 2024, the total seizure number of illicit drugs^{*1} showed an increase to 1,020 (up 24% YOY), while the total seizure amount^{*2,3} showed a decrease to approx. 2,579kg (down 6% YOY). The total seizure amount of illicit drugs exceeded 2 tons for two years in a row for the first time, which was the third largest record in history and that situation is significantly serious. And the seizure number of cannabis and narcotics was the highest record in history.

*1: The term "Illicit drugs" refers to methamphetamine, cannabis, opium, narcotics (heroin, cocaine, MDMA, etc.), psychotropic substances and designated substances.

*2: Tablet-type illicit drugs are not included.

*3: Only fixed amount of each seizure case is added to the total amount. The same applies hereinafter.

*4: The term "Cannabis" includes THC products and cannabis stipulated as "narcotics" under the amended Cannabis Control Act and Narcotics and Psychotropics Control Act which have been effective since December 12, 2024. THC products mean liquids or sweets etc. which contain THC (tetrahydrocannabinol), harmful ingredients of cannabis.

Massive seizure of illicit drugs

Case ① » Sea Cargo

Approx. 531kg of methamphetamine was seized from sea cargo -container- arriving from Mexico.

| In April 2024, Yokohama Customs |



Case ② » Ship to Ship Trade

Approx. 178kg of cocaine which had been transferred ship-to-ship at sea off the coast of Chiba Prefecture was seized at a fishing port in Tateyama, Chiba Prefecture.

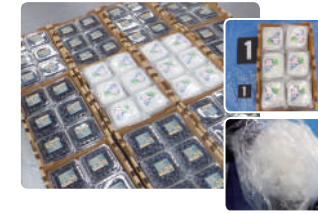
| In May 2024, Yokohama Customs etc |



Case ③ » Air Cargo

Approx. 59 kg of methamphetamine was seized from air cargo -plastic containers for blueberries- arriving from Mexico.

| In October 2024, Yokohama Customs etc. |



Case ④ » Air Passenger

Approx. 11 kg of methamphetamine was seized from belongings of a passenger -cloth bags etc.- arriving at Fukuoka Airport from Thailand.

| In March 2024, Moji Customs |



Case ⑤ » Air Passenger

Approx. 16 kg of cannabis plants was seized from belongings of a passenger -a suitcase- arriving at Narita International Airport from Thailand.

| In September 2024, Tokyo Customs |



Case ⑥ » International Mail

Approx. 3 kg of ketamine was seized from international mail -a water purifier- arriving from the Netherlands.

| In September 2024, Nagoya Customs |



The seizure number of gold smuggling was 493/ the seizure amount was approx. 1,218kg



In 2024, the seizure number of gold* smuggling was 493 (up approx.2.3 times YOY), and the seizure amount was approx. 1,218kg (up approx. 4 times YOY), both of which increased. Because of the rapid increase in the number of foreign tourists visiting Japan and the soaring price of gold, the number and the seizure amount of gold smuggling case are increasing, so Japan customs will continue to implement strict border control.

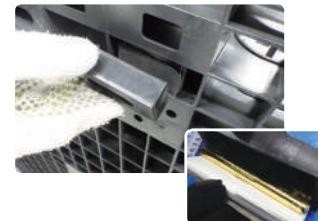
*: The term "gold" includes gold bullion and other processed gold products.

Clever methods of concealment

Case ① » Air Cargo

Approx. 160 kg of gold bullion was detected from air cargo -plastic pallets- arriving from Hong Kong.

| In January 2024, Osaka Customs |



Case ② » Ship to Ship Trade

Approx. 40 kg of gold bullion traded offshore off the coast of Ehime prefecture was detected at the floating pier in Imabari city, Ehime prefecture.

| In November 2024, Moji Customs |



Mission of Japan Customs

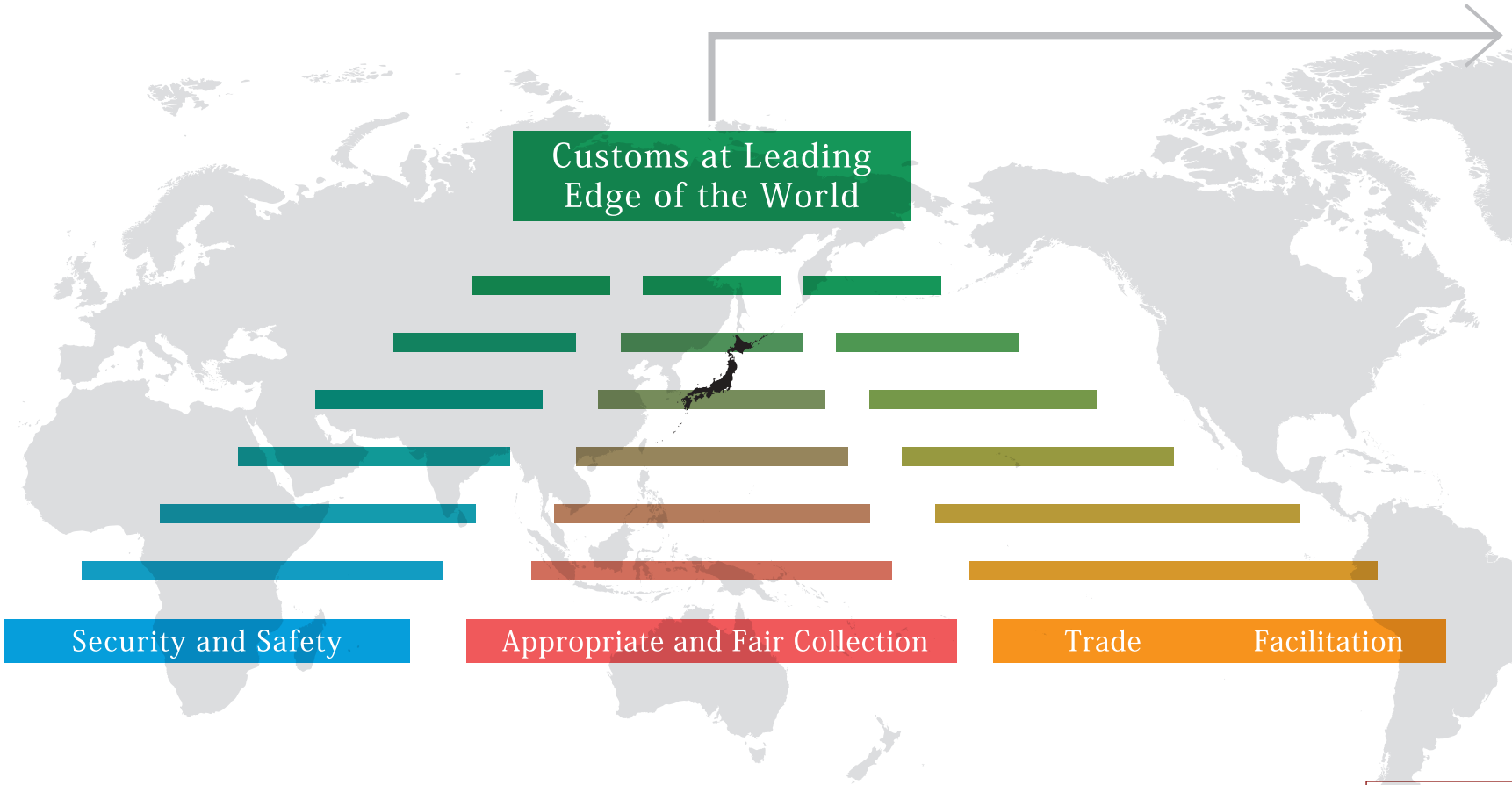
Goal: Customs at the Leading Edge of the World

Japan Customs aims to be a leading agency of the world to realize sound development of trade and a safe and secure society.



Three Missions of Japan Customs

- 1
- Realizing a safe and secure society
- Realizing the safest country in the world by prioritizing prevention of smuggling of firearms, illicit drugs and other harmful goods and curtailing terrorist activities in the country
- 2
- Collecting customs duties and domestic consumption taxes appropriately and fairly
- Collecting customs duties and domestic consumption taxes appropriately and fairly as a tax collecting agency accumulating about ¥13.1 trillion, which is nearly equivalent to 16.9% of tax and stamp revenues.
- 3
- Further facilitating trade procedures
- To further facilitate customs procedures while ensuring security in international distribution
Maintain and strengthen the multilateral trading system through trade negotiations like EPAs (Economic Partnership Agreements), and contribute to economic growth in Japan.



Measures to Realize Three Missions



Installing state-of-the-art inspection equipment	Cooperation with private enterprises	Cooperation with foreign customs authorities
Researching and studying leading-edge technologies to detect illicit drugs with high accuracy while installing more effective inspection equipment with existing technologies	Advancing international trade facilitation by building partnerships with private enterprises	Improving quality of customs operation by enhancing partnership with foreign customs authorities through customs mutual assistance agreements
Cooperation with other government agencies	Further application of ICT	Promoting trade negotiations
Strict enforcement across the government as a whole in close cooperation and information exchange with relevant government agencies	Realizing further simplified and efficient import/export procedures and better services for traders by applying advanced ICT for customs clearance systems	Realizing Customs three missions through trade negotiations like EPAs, which deal simplification and harmonization of Customs procedures, Customs cooperation and information exchange.

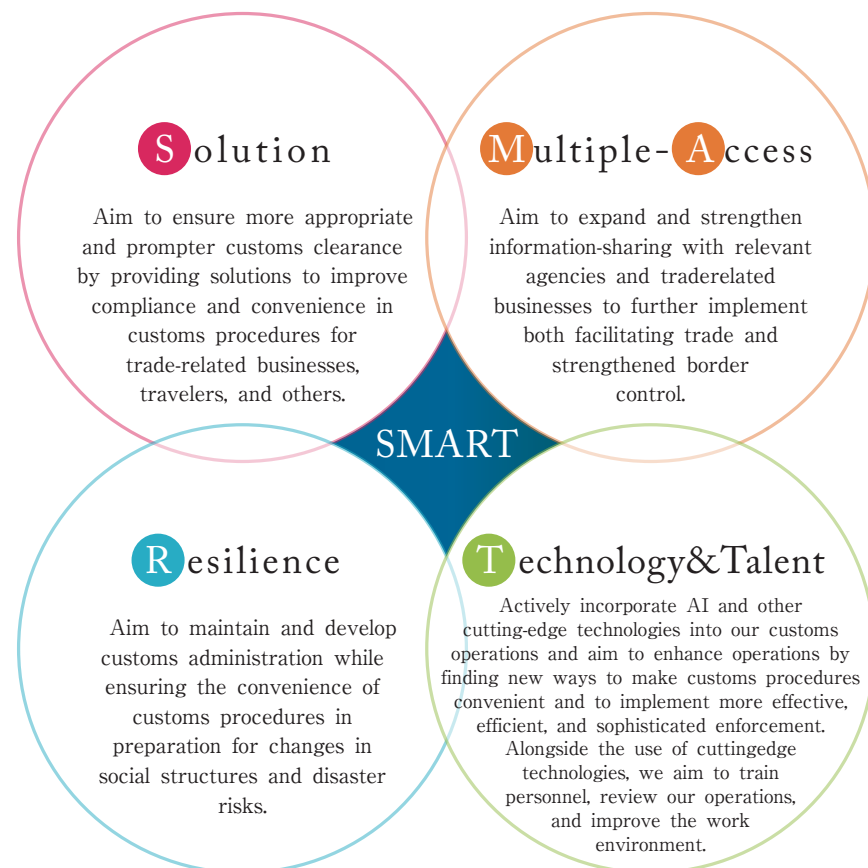
VISION

medium- to
long-term vision of customs
administration

SMART Customs Initiative

Aiming for the world's most advanced customs (smart customs)
「SMART Customs Initiative 2020」 (June 2020)

under the following four keywords

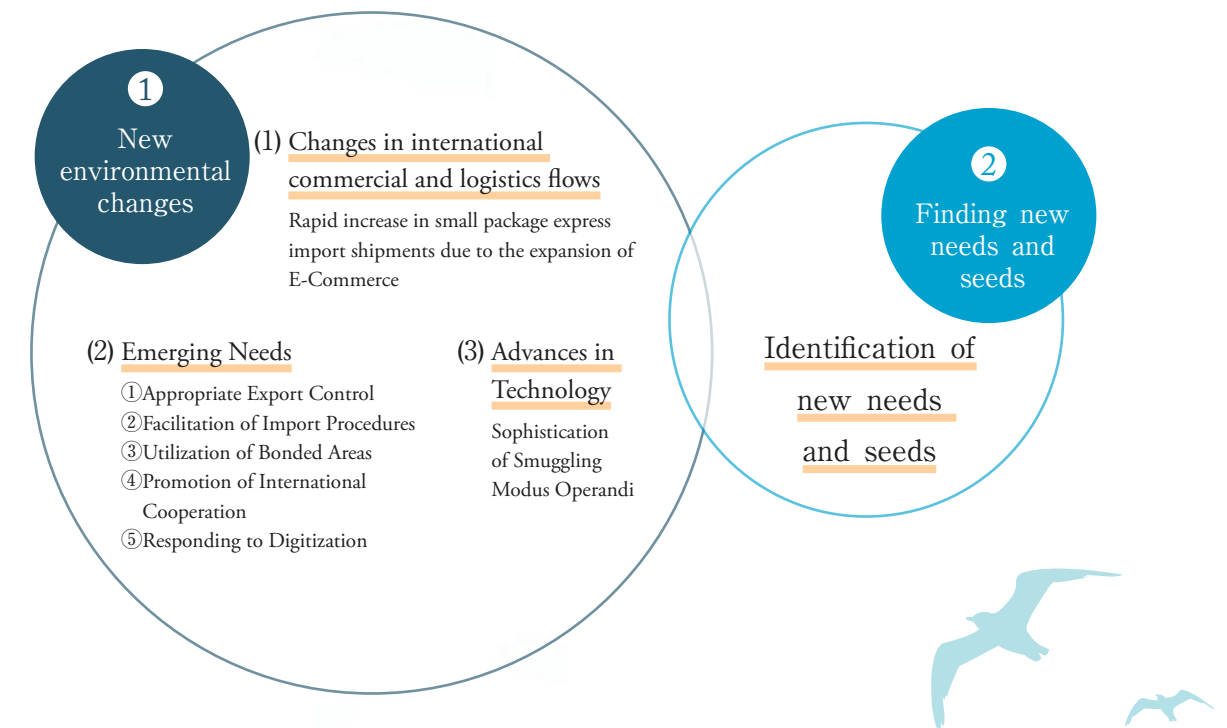


take initials from four keywords 「SMART」

the Customs and Tariff Bureau and Japan Customs must work to improve the sophistication and efficiency of our customs operations, improve convenience for our users, and meet the expectations of the public 20 30 years from now.

「Action Plan 2022 for the Realization of SMART Customs」
(November 2022)

Upgraded the measures set forth in the “Initiative” by incorporating new measures to respond to the environmental changes and needs.



a happy future
for each and
every citizen

スマート税関構想